

**Solar Insolation Level in LEBANON**

**DAWTEC**

**2013**



*Prepared by DAWTEC*  
+961-1-288688  
+961-70-288688  
dawtec@dawtec.com  
www.dawtec.com

**INSOLATION LEVEL IN LEBANON AT 0°**

**Daily Solar Irradiance in Lebanon at 0°**

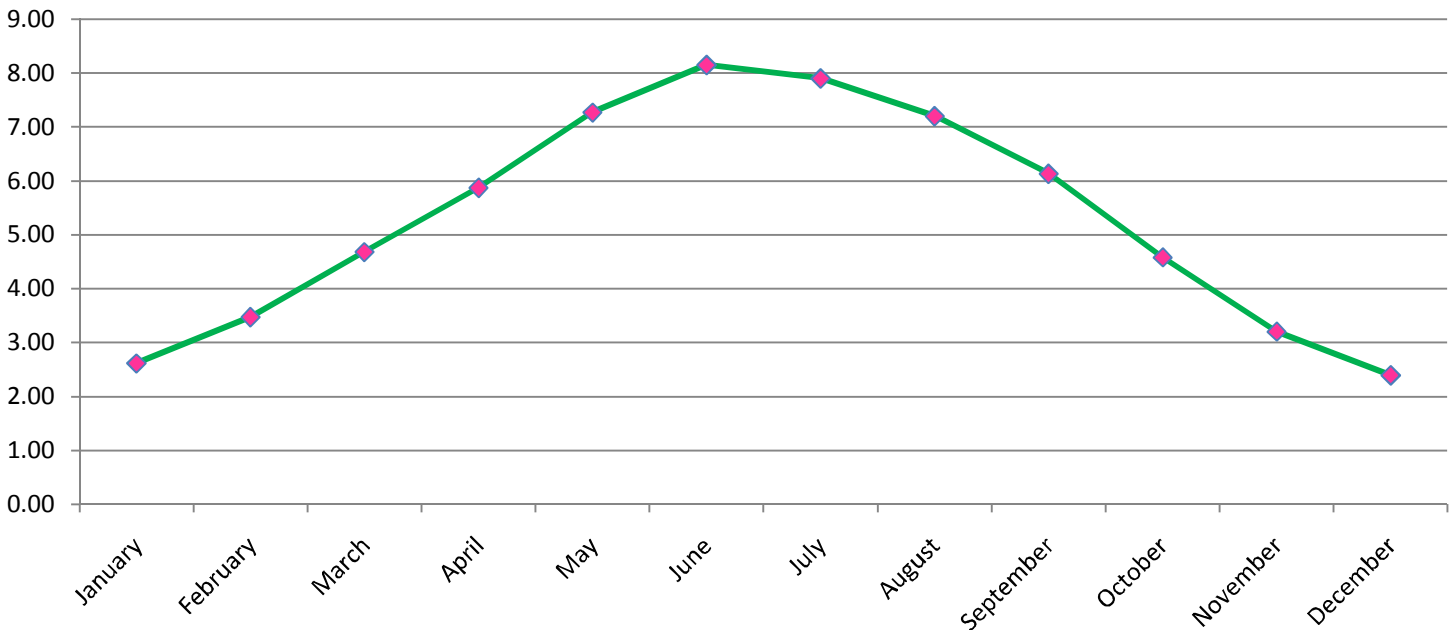
January	2.61 kWh/m <sup>2</sup> /day
February	3.47 kWh/m <sup>2</sup> /day
March	4.68 kWh/m <sup>2</sup> /day
April	5.87 kWh/m <sup>2</sup> /day
May	7.27 kWh/m <sup>2</sup> /day
June	8.15 kWh/m <sup>2</sup> /day
July	7.90 kWh/m <sup>2</sup> /day
August	7.20 kWh/m <sup>2</sup> /day
September	6.13 kWh/m <sup>2</sup> /day
October	4.58 kWh/m <sup>2</sup> /day
November	3.20 kWh/m <sup>2</sup> /day
December	2.39 kWh/m <sup>2</sup> /day

**Monthly Solar Irradiance in Lebanon at 0°**

January	80.91 kWh/m <sup>2</sup> /month
February	97.16 kWh/m <sup>2</sup> /month
March	145.08 kWh/m <sup>2</sup> /month
April	176.10 kWh/m <sup>2</sup> /month
May	225.37 kWh/m <sup>2</sup> /month
June	244.50 kWh/m <sup>2</sup> /month
July	244.90 kWh/m <sup>2</sup> /month
August	223.20 kWh/m <sup>2</sup> /month
September	183.90 kWh/m <sup>2</sup> /month
October	141.98 kWh/m <sup>2</sup> /month
November	96.00 kWh/m <sup>2</sup> /month
December	74.09 kWh/m <sup>2</sup> /month

Ref: European Commission - JOINT RESEARCH CENTER - Institute for Energy and Transport (IET)

The daily solar irradiance in kWh/m<sup>2</sup>/day all year round is as follows:



**INSOLATION LEVEL IN LEBANON AT 45°**

**Daily Solar Irradiance in Lebanon at 45°**

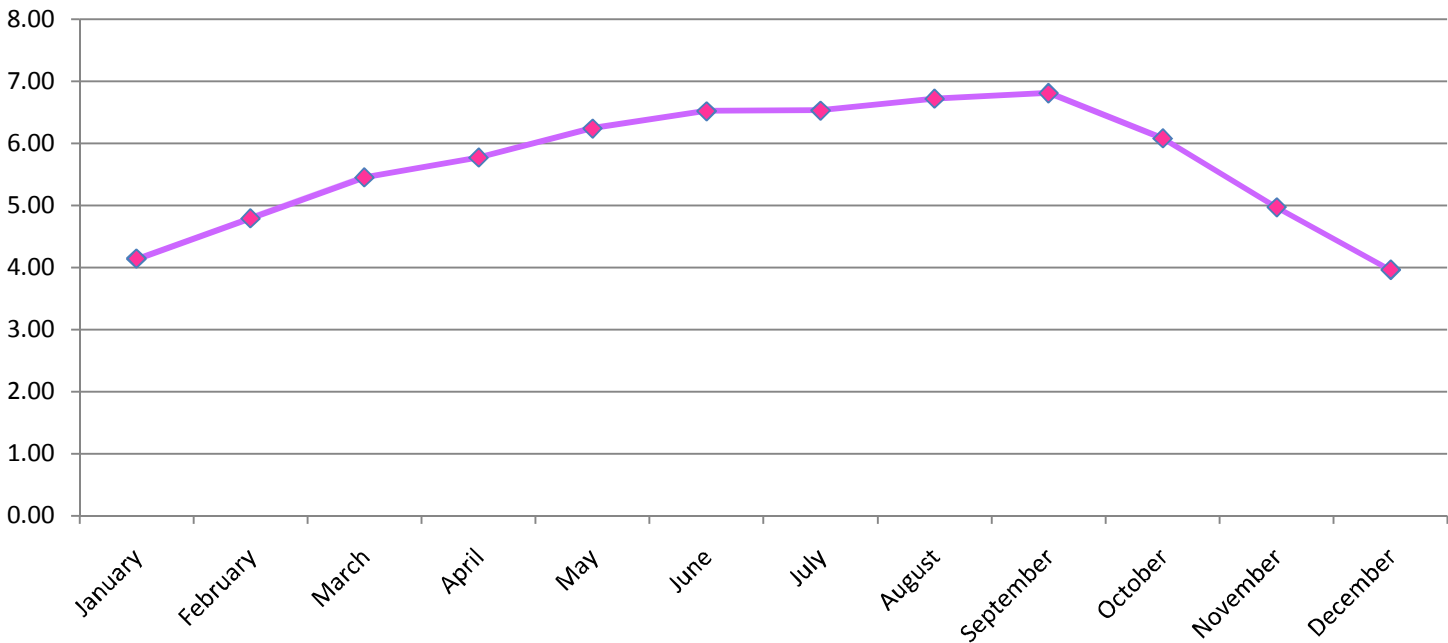
January	4.14 kWh/m <sup>2</sup> /day
February	4.79 kWh/m <sup>2</sup> /day
March	5.45 kWh/m <sup>2</sup> /day
April	5.77 kWh/m <sup>2</sup> /day
May	6.24 kWh/m <sup>2</sup> /day
June	6.52 kWh/m <sup>2</sup> /day
July	6.53 kWh/m <sup>2</sup> /day
August	6.72 kWh/m <sup>2</sup> /day
September	6.81 kWh/m <sup>2</sup> /day
October	6.08 kWh/m <sup>2</sup> /day
November	4.97 kWh/m <sup>2</sup> /day
December	3.96 kWh/m <sup>2</sup> /day

**Monthly Solar Irradiance in Lebanon at 45°**

January	128.34 kWh/m <sup>2</sup> /month
February	134.12 kWh/m <sup>2</sup> /month
March	168.95 kWh/m <sup>2</sup> /month
April	173.10 kWh/m <sup>2</sup> /month
May	193.44 kWh/m <sup>2</sup> /month
June	195.60 kWh/m <sup>2</sup> /month
July	202.43 kWh/m <sup>2</sup> /month
August	208.32 kWh/m <sup>2</sup> /month
September	204.30 kWh/m <sup>2</sup> /month
October	188.48 kWh/m <sup>2</sup> /month
November	149.10 kWh/m <sup>2</sup> /month
December	122.76 kWh/m <sup>2</sup> /month

Ref: European Commission - JOINT RESEARCH CENTER - Institute for Energy and Transport (IET)

The daily solar irradiance in kWh/m<sup>2</sup>/day all year round is as follows:



**INSOLATION LEVEL IN LEBANON AT 90°**

**Daily Solar Irradiance in Lebanon at 90°**

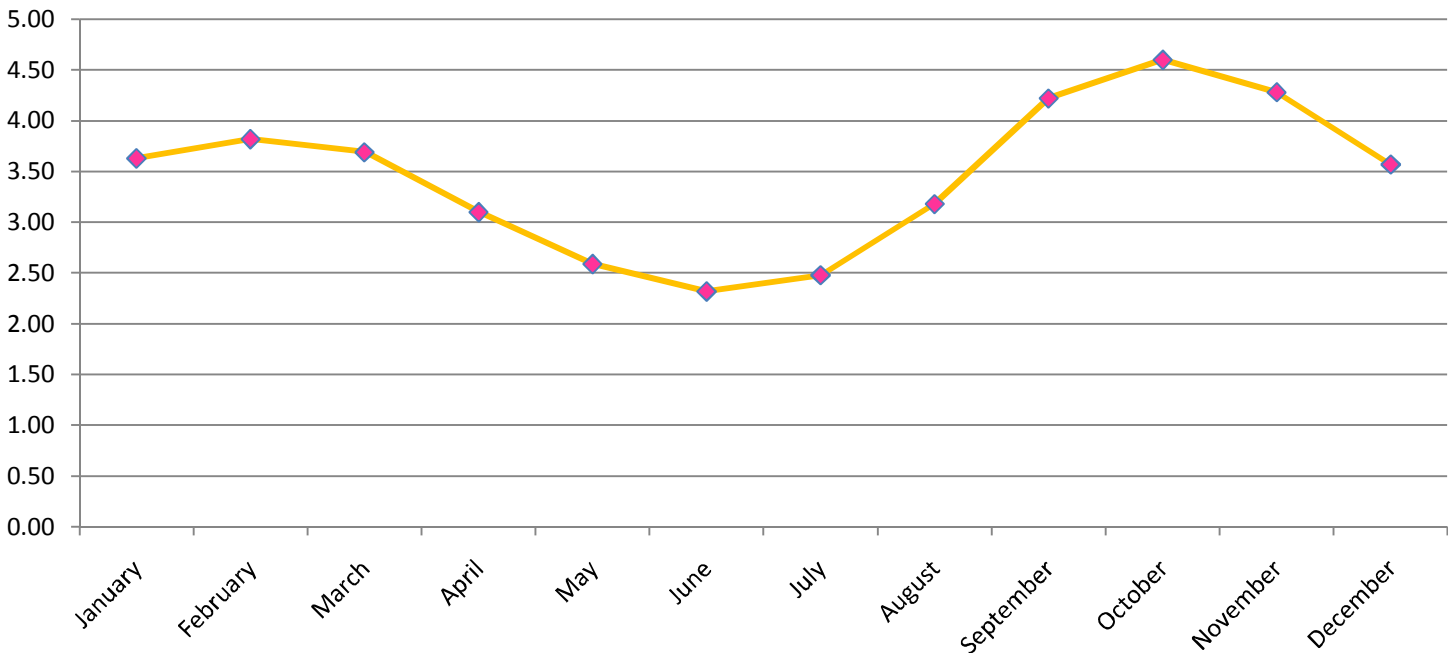
January	3.63 kWh/m <sup>2</sup> /day
February	3.82 kWh/m <sup>2</sup> /day
March	3.69 kWh/m <sup>2</sup> /day
April	3.10 kWh/m <sup>2</sup> /day
May	2.59 kWh/m <sup>2</sup> /day
June	2.32 kWh/m <sup>2</sup> /day
July	2.48 kWh/m <sup>2</sup> /day
August	3.18 kWh/m <sup>2</sup> /day
September	4.22 kWh/m <sup>2</sup> /day
October	4.60 kWh/m <sup>2</sup> /day
November	4.28 kWh/m <sup>2</sup> /day
December	3.57 kWh/m <sup>2</sup> /day

**Monthly Solar Irradiance in Lebanon at 90°**

January	112.53 kWh/m <sup>2</sup> /month
February	106.96 kWh/m <sup>2</sup> /month
March	114.39 kWh/m <sup>2</sup> /month
April	93.00 kWh/m <sup>2</sup> /month
May	80.29 kWh/m <sup>2</sup> /month
June	69.60 kWh/m <sup>2</sup> /month
July	76.88 kWh/m <sup>2</sup> /month
August	98.58 kWh/m <sup>2</sup> /month
September	126.60 kWh/m <sup>2</sup> /month
October	142.60 kWh/m <sup>2</sup> /month
November	128.40 kWh/m <sup>2</sup> /month
December	110.67 kWh/m <sup>2</sup> /month

Ref: European Commission - JOINT RESEARCH CENTER - Institute for Energy and Transport (IET)

The daily solar irradiance in kWh/m<sup>2</sup>/day all year round is as follows:





### Monthly Solar Irradiance per Square Meter for 0°, 45°, and 90° Inclination

